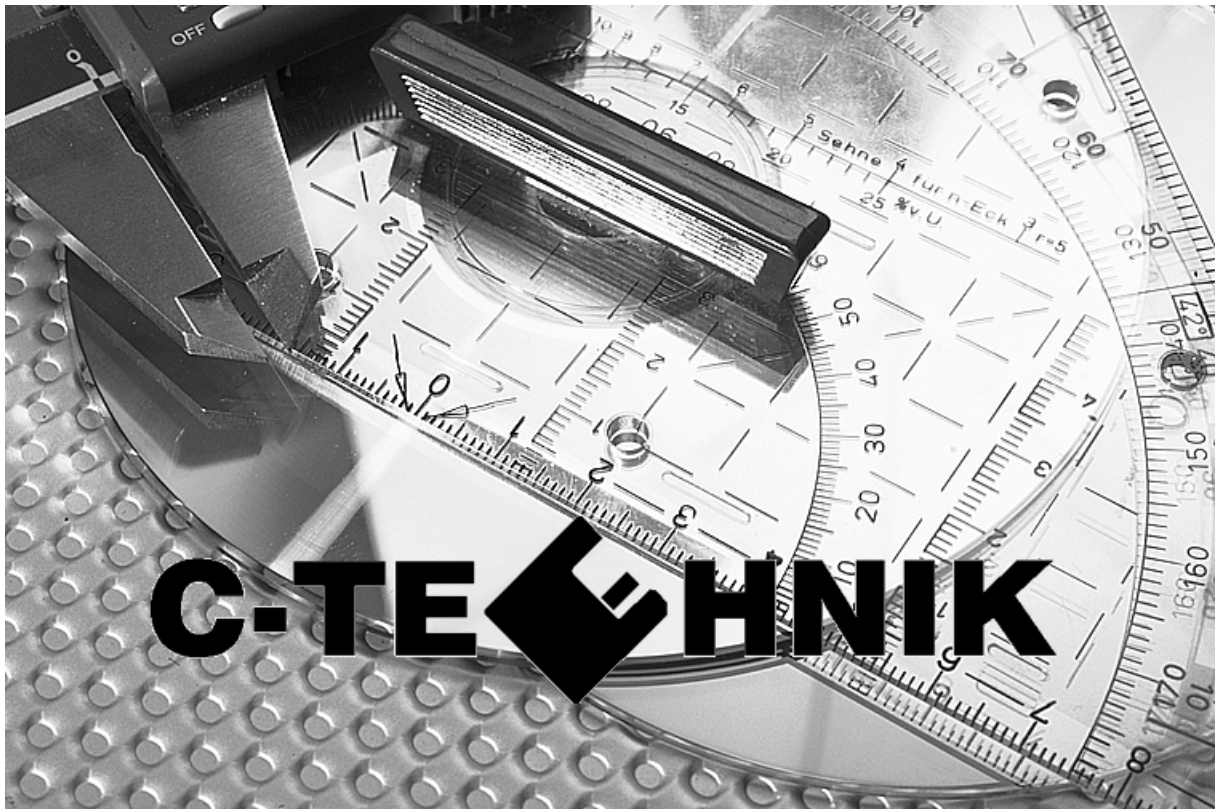


---

# CAD4U(-XS) ARCHITECTURE LIBRARY



**ARCHITECTURE Library  
for CAD4U & CAD4U-XS**

Copyright © C-TECHNIK Software GmbH - Deutschland

Neither the whole nor any part of the information contained in, or the product described in, this manual may be adapted or reproduced in any material form except with the prior written approval of C-TECHNIK Software GmbH, Im Vogelsang 9, D-74861 Neudenau.

The product described in this manual is subject to continuous development and improvement. All information of a technical nature and particulars of the product and its use (including the information and particulars in this manual) is given by C-TECHNIK Software GmbH in good faith. C-TECHNIK Software GmbH welcomes comments and suggestions relating to the product and this manual.

This manual is intended only to assist the reader in the use of the product and therefore C-TECHNIK Software GmbH shall not be liable for any loss or damage whatsoever arising from the use of information or particulars in, or any error or omission in, this manual, or any incorrect use of the product.

Copyright © C-TECHNIK Software GmbH - Germany 2010

## ***Trademarks***

Microsoft®, Windows® and IntelliMouse® are trademarks of Microsoft Corp.

Adobe® Acrobat® is a registered trademark of Adobe Systems Incorp.

CAD4U® are registered trademarks of

C-TECHNIK Software GmbH

Im Vogelsang 9  
74861 Neudenau  
Germany

info@c-technik.de

All rights reserved!

August 2010

---

# Contents

<b>CAD4U(-XS) ARCHITECTURE LIBRARY</b>	<b>1</b>
Contents .....	3
<b>Introduction</b>	<b>4</b>
General informations .....	4
<b>Installation</b>	<b>5</b>
Recommendations .....	5
Existing Layer Table .....	5
Library Index Pages .....	5
How to Copy the Index Pages .....	5
Settings Files.....	8
Copy the settings files ( *.LFT, *.DIM und *.PEN ).....	8
Layer Table .....	9
Dimension .....	10
Plot (only CAD4U !).....	10
Settings in MBLG_05.PEN.....	11
Settings in MBLG_07.PEN.....	12
<b>Index pages</b>	<b>13</b>
Overview .....	13

# Introduction

---

## General informations

A major benefit of **CAD4U(-XS)** is that standard and commonly used symbols and details can be selected from the Graphic Library and inserted freely into your drawings. You can easily create these Library items by drawing them yourself or "cutting" them out of existing CAD drawings.

The Architecture Library is a pre-drawn Library which includes commonly used architectural symbols. It can saving you many hours of work on every drawing. You can use the symbols directly and /or modify them to suit your specific requirements with. Its also easy to add new symbols to this library.

Some of the drawings are still labeled in german. Feel free to change these labels to your specific needs. Proceed as described now: load the drawing, file it again and choose "+LABEL" from the window appearing on the screen. Another window will be displayed where you may enter the new Label-Text.

C-TECHNIK Software GmbH

# Installation

---

## Recommendations

Before installing the Architecture Library you should have installed **CAD4U(-XS)** on your computer. It's important to know the path of your existing library, because you may want to add the Architecture Library to your existing library.

**We recommend to make a backup of the existing library before installing the Architecture Library!**

**We also recommend to read the chapter LIBRARY MANAGEMENT / BACKUPS in the CAD4U Online Help System, too.**

---

## Existing Layer Table



If you use your own layer table, please save it before the installation of the Symbol Library.  
Open the LAYER TABLE, click onto the SAVE button and save your layer table into a named file.

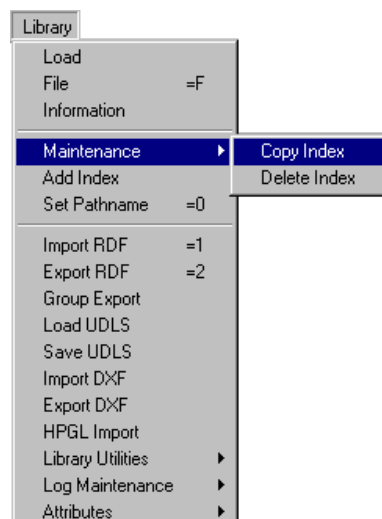
---

## Library Index Pages

### How to Copy the Index Pages

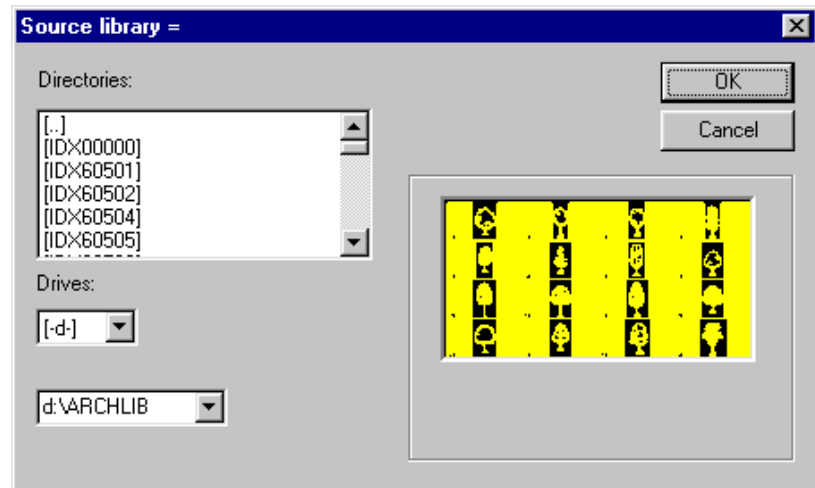
If you want to add the Symbol Library pages to your existing library now, please start **CAD4U(-XS)**.

Select LIBRARY / MAINTENANCE / COPY INDEX from the menu.



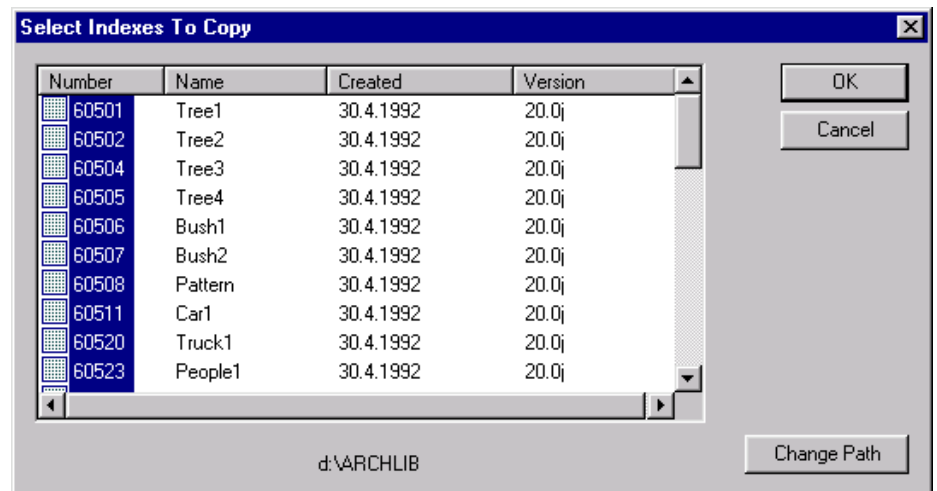
First you have to define the **Source Library**.  
 Herefore select the "Drive" for example of your CD-ROM drive first. Now  
 navigate to the folder

\Add-Ons  
 \Architectural Symbols  
 \ARCHLIB



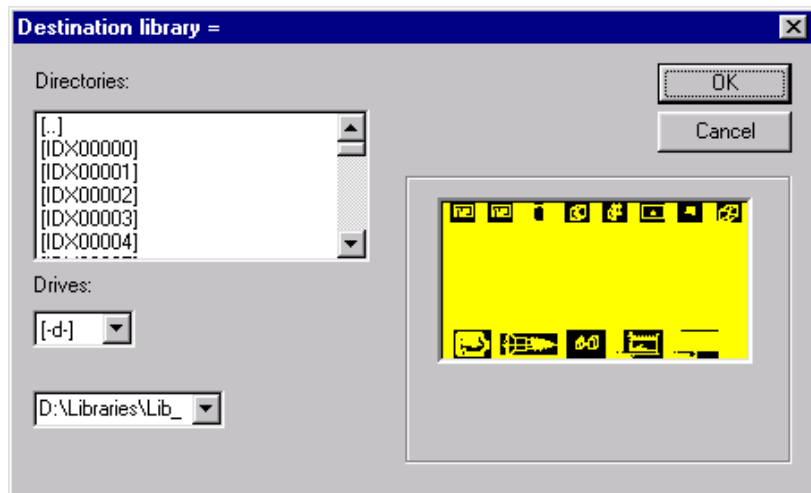
As soon as ARCHLIB was found and the first page is displayed in yellow  
 colour, confirm with OK button.

Mark the index pages you want to copy (you can use the SHIFT or the  
 CTRL-key to select more than one index page), then confirm with OK  
 button again.



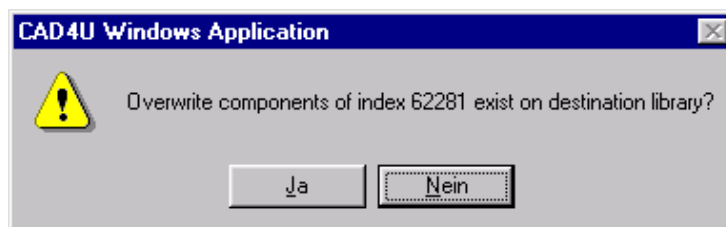
Now you have to define the **Destination Library** (e.g. your existing  
 library):

For example D:\CAD4ULIB



As soon as the **Destination Library** was found and the first page is displayed in yellow colour, confirm with OK button.

If you copy the index pages 62280-62285 the following messages may be displayed on the screen:



Please click on to the "No"-button.

**CAD4U(-XS)** will now copy the selected index pages to your library. This can take a few minutes.

### Warnings

The **CAD4U(-XS)** library system is complex and powerful. It uses a structured system of files and directories to hold drawings using less disk space than would be required if the drawings were stored as simple files, and to provide graphic Indexes for drawing selection.

Used correctly, it is a great aid to drawing and drawing management; with sufficient carelessness, it can destroy your drawings. Three points must be emphasized:

**Don't try to copy or modify libraries using DOS commands or file-management programs (e.g. WINDOWS EXPLORER).**

---

## Settings Files

### Copy the settings files ( \*.LFT, \*.DIM und \*.PEN )

The Architecture Library includes some files for working with it.  
The Settings Files are:

- SYMBOLLAYERS.LFT
- MBLG\_05.DIM
- MBLG\_07.DIM
- MBLG\_05.PEN
- MBLG\_07.PEN

If you want to use the files you have to copy them manually from the CD-ROM folder

```
\Add-Ons
\Architectural Symbols
\AppData
```

into the **application data** folder of **CAD4U(-XS)**, **not** into the program files folder!

In case of Windows **Vista** or **7**, this folder could be named

```
C:\Users
  \All Users
  \C-TECHNIK
  \CAD4U
```

In case of Windows **XP**, this folder could be named

```
C:\Documents and Settings
  \All Users
  \Application Data
  \C-TECHNIK
  \CAD4U
```

Unlike copying index pages, you can use the Windows Explorer for copying these files.

**The settings in the files are only suggestions. Please feel comfortable to modify them to suit your specific requirements.**



---

## Layer Table



The SYMBOLLAYERS.LFT is a predefined Layer Table for use with this Symbol Library.

Use SETTINGS / LAYER TABLE to open the layer table, click onto the OPEN button, select SYMBOLLAYERS.LFT and click onto OPEN to load this special layer table.

SYMBOLLAYERS.LFT

EBENEN-NAME	EBENE	ANZEIGE	FARBE	LT	LB
Diverse	0	JA	A	A	1
Sichtbare Linien / Visible lines	1	AKTIV	2	1 —	1
Verdeckte Kanten / Hidden lines	2	JA	3	6 - - -	1
Mittellinien / Centrelines	3	JA	7	7 .. - -	1
Schraffur / Hatching	4	JA	9	A	1
Bemassung / Dimensions	5	JA	1	1 —	1
Text	6	JA	6	1 —	1
Hilfslinien / Helplines	7	JA	15	1 —	1
Strich-Punkt / Dash-dot-lines	8	JA	4	8	1
Symbols	9	JA	5	1 —	1

---

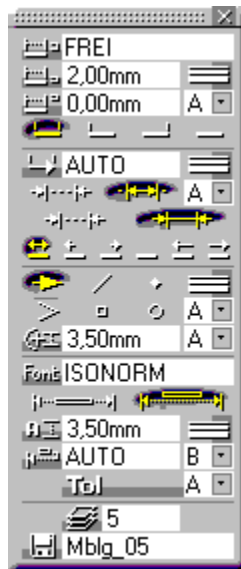
## Dimension

The Architecture Library includes two files:

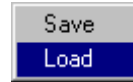
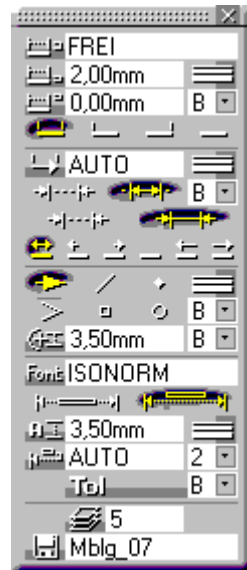
- MBLG\_05.DIM
- MBLG\_07.DIM

for the dimension of drawings. To load the DIMENSION STYLE click on the STYLE-button. A window is displayed which gives you the option to SAVE or to LOAD a Style. Select LOAD, then select the Style name from the catalogue.

MBLG\_05.DIM



MBLG\_07.DIM



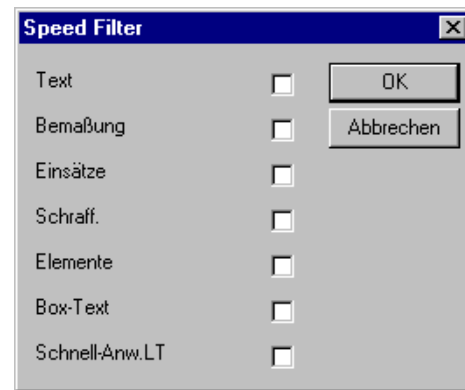
---

## Plot (only CAD4U !)

The Architecture Library includes two files:

- MBLG\_05.PEN
- MBLG\_07.PEN

for the dimension of drawings. To load the PEN STYLE, click on the STYLE-button. A window is displayed which gives you the option to SAVE or to LOAD a Style. Select LOAD, then select the Style name from the catalogue.



	mm		#			
1	0.30	Black	1	0.30	1	1
2	0.60	Red	2	0.30	1	1
3	0.80	Blue	3	0.30	1	1
4	1.00	Green	4	0.30	1	1
5	1.20	Violet	5	0.30	1	1
6	1.50	Yellow	6	0.30	1	1
7	1.80	Brown	7	0.30	1	1
8	2.00	Black	8	0.30	1	1
9	0.20	Black	9	0.30	1	1
10	0.10	Black	10	0.30	1	1

## Settings in MBLG\_05.PEN

The following table shows the settings filed in MBLG\_05.PEN.

Color	Pen-Color
1	Black
2	Grey
3	L. Red
4	Grey
5	Grey
6	Grey
7	Grey
8	Black
9	Grey
10	Black
11	Black
12	Black
13	Black
14	Black
15	Grey
16	Black
17	Black

Code	Pen-Name
1	Black
2	Grey
3	D. Red
4	Red
5	L. Red
6	Pink
7	D. Orange
8	Orange
9	L. Orange
10	Yellow
11	D. Brown
12	Brown
13	H. Brown

Code	Pen-Name
14	D. Blue
15	Blue
16	L. Blue
17	D. Green
18	Green
19	L. Green
20	D. Violett
21	L. Violett

## Settings in MBLG\_07.PEN

The following table shows the settings filed in MBLG\_07.PEN.

Color	Pen-Color
1	Black
2	Grey
3	H. Red
4	Grey
5	Grey
6	Grey
7	Grey
8	Black
9	Grey
10	Black
11	Black
12	Black
13	Black
14	Black
15	Grey
16	Black
17	Black

Of course you can use your own settings or change the settings filed in MBLG\_05.PEN and MBLG\_07.PEN.

For more information please read:

**START / ALL PROGRAMS / CAD4U(-XS) / DOCUMENTATIONS / FILE.PDF, chapter "PLOT".**

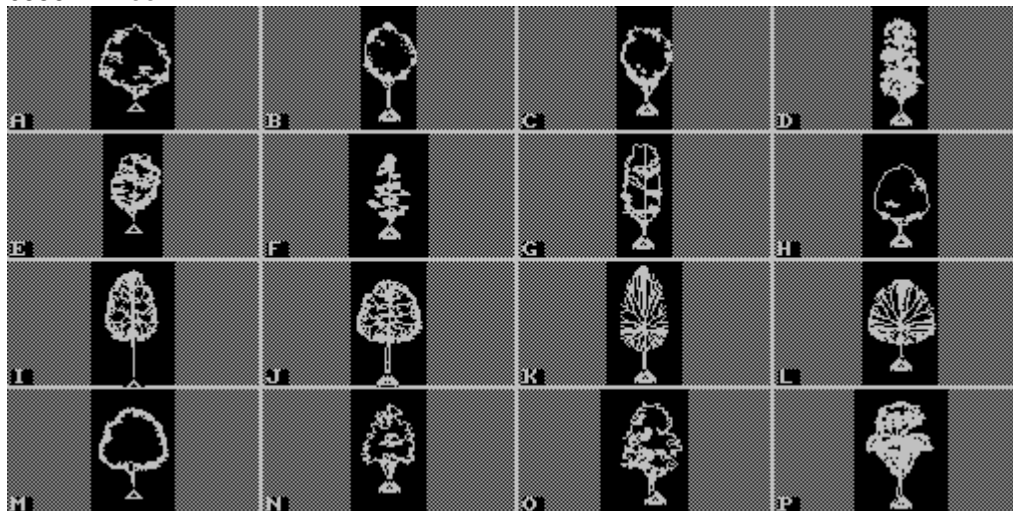
# Index pages

---

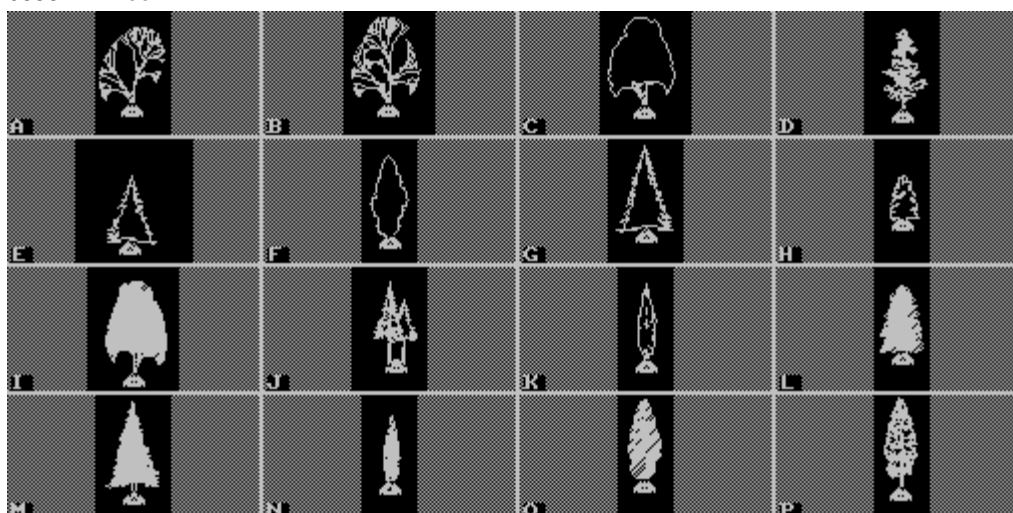
## Overview

The Architecture Library includes the following index pages:

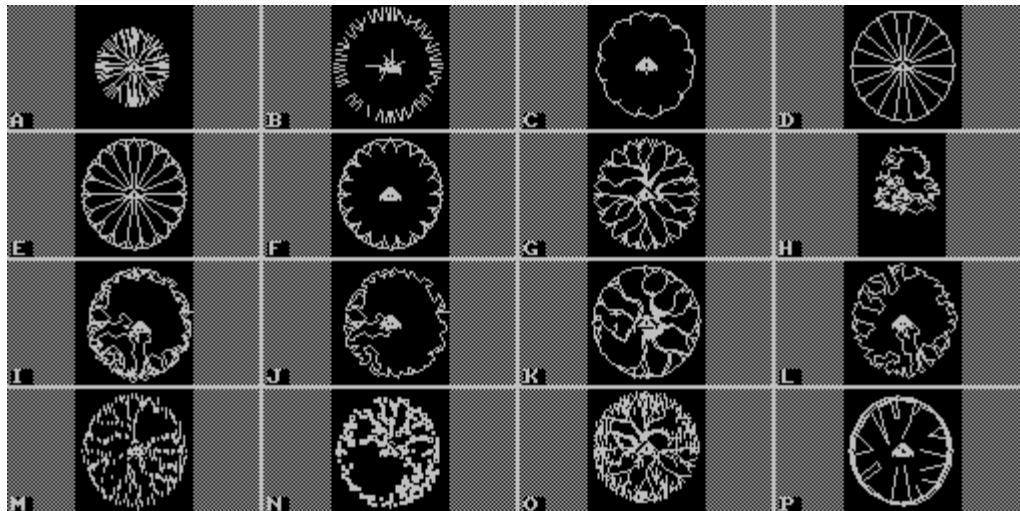
**60501 Tree1**



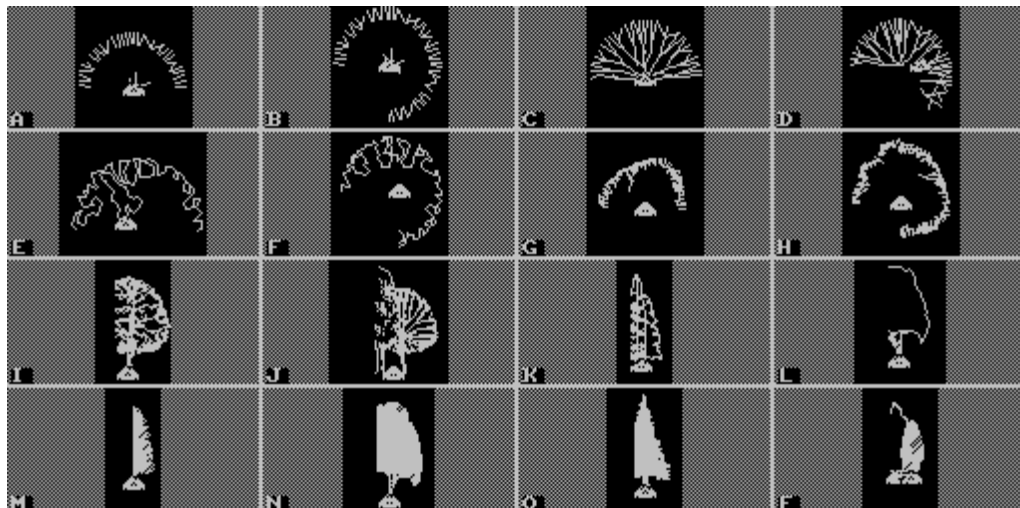
**60502 Tree2**



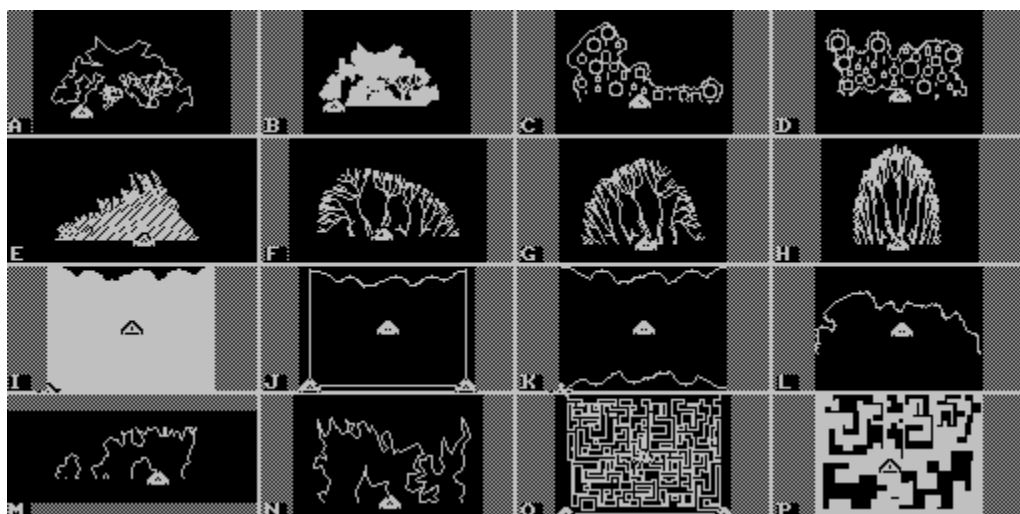
60504 Tree3



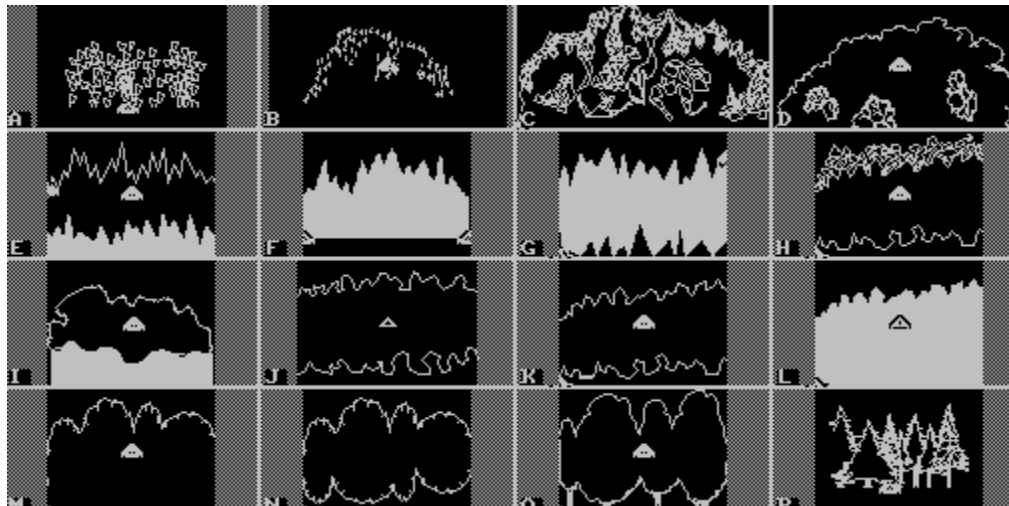
60505 Tree4



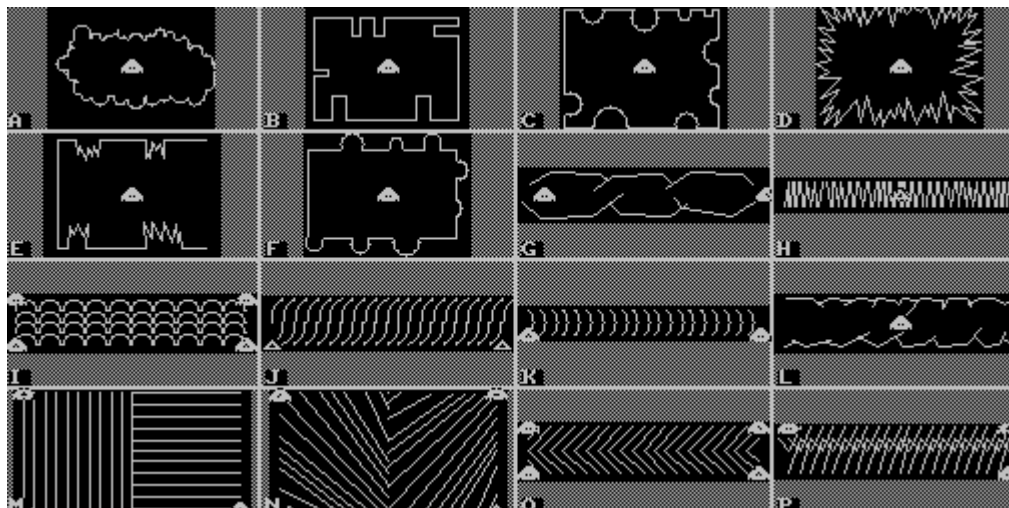
60506 Bush1



60507 Bush2



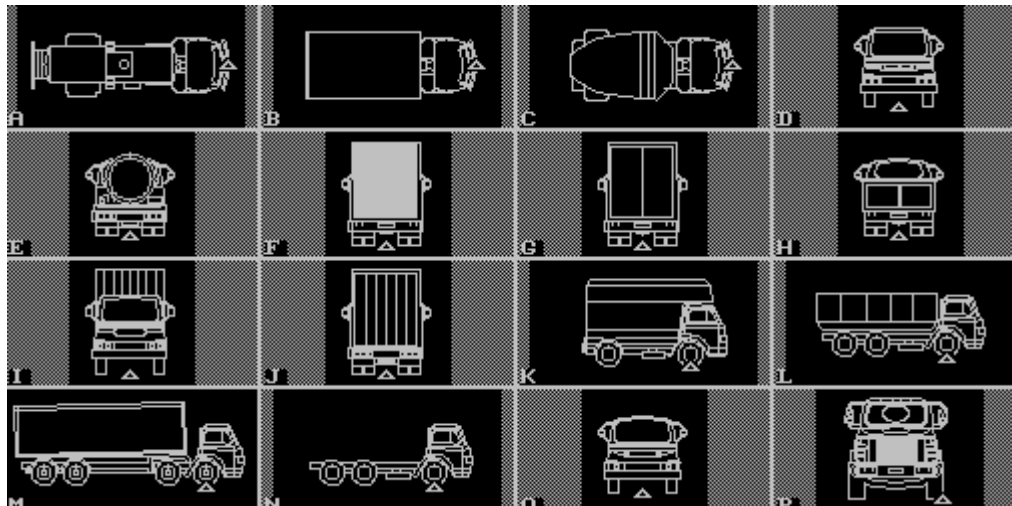
60508 Pattern



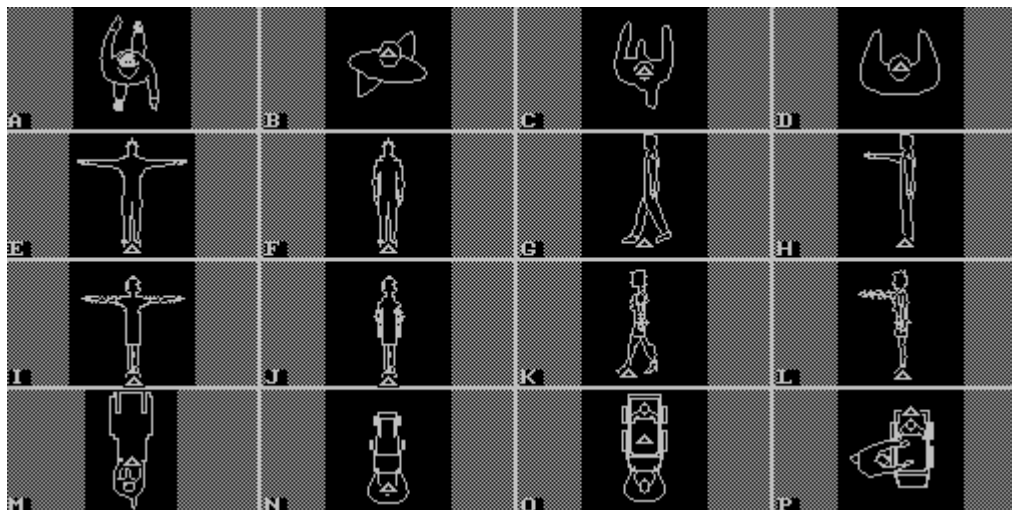
60511 Car1



# 60520 Truck1



# 60523 People1

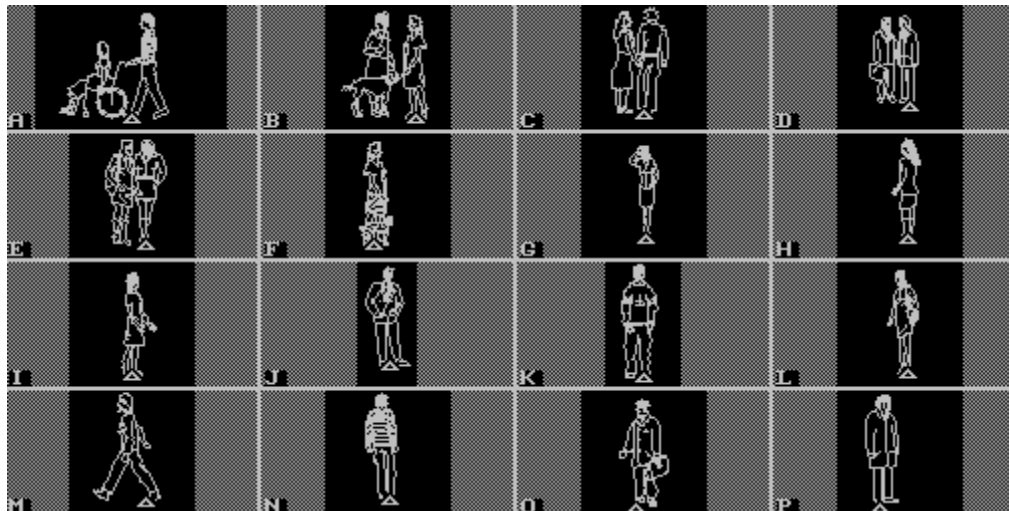


# 60524 Handicap

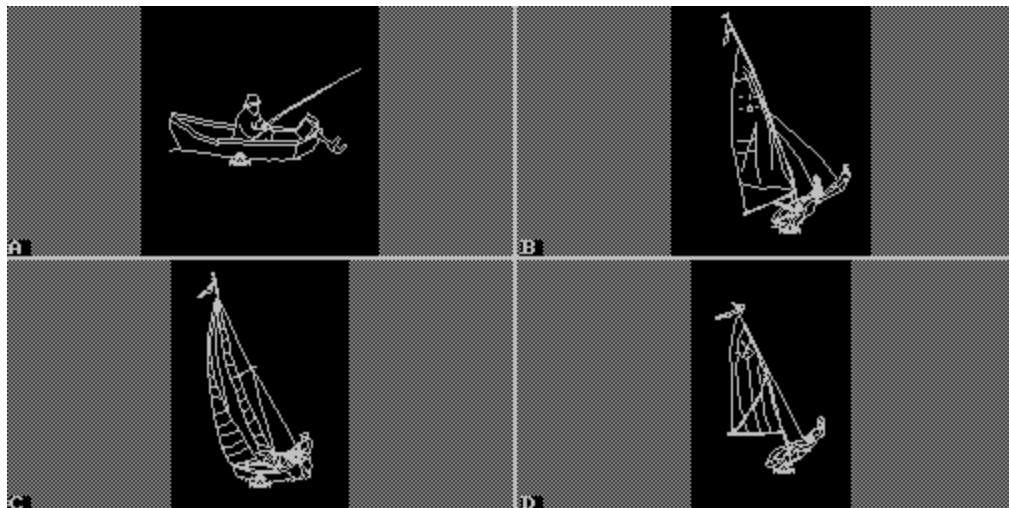




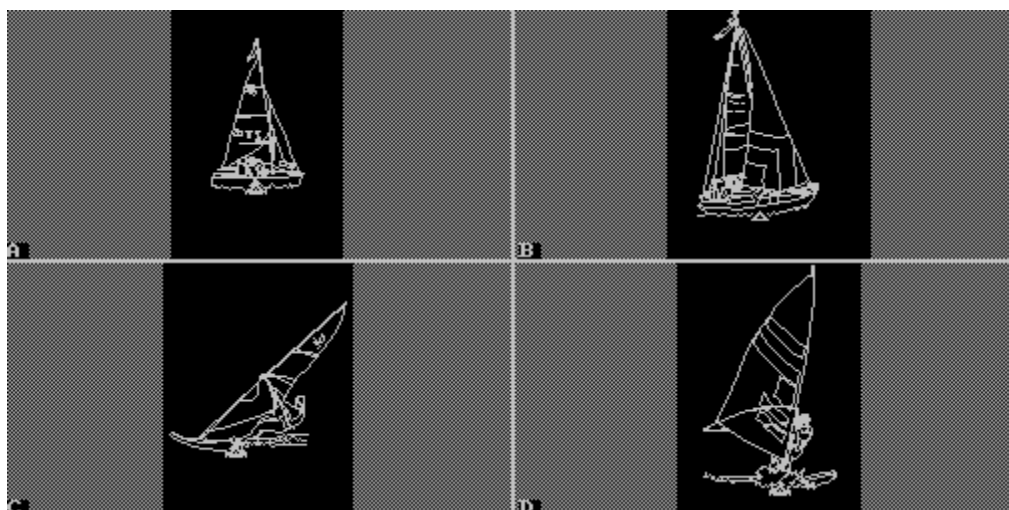
60525 People2



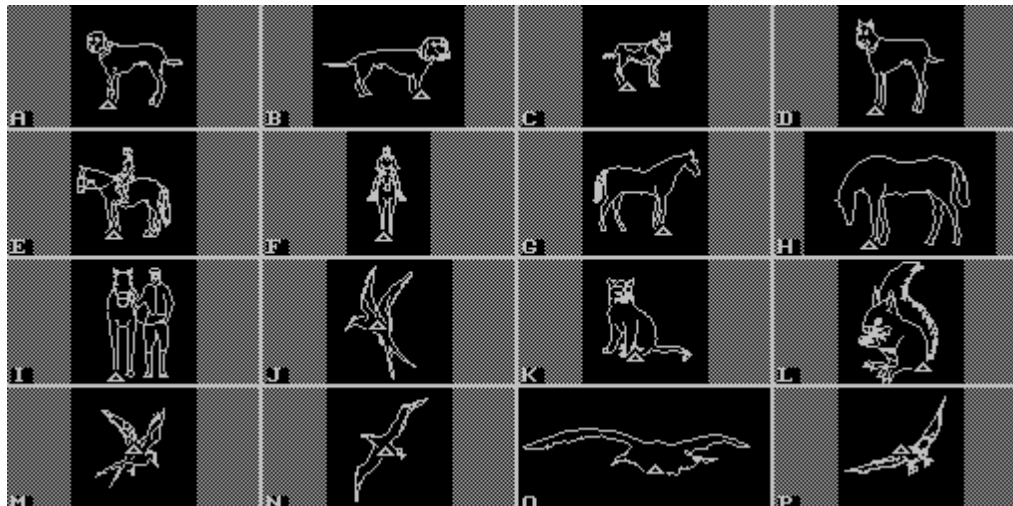
60528 Boat1



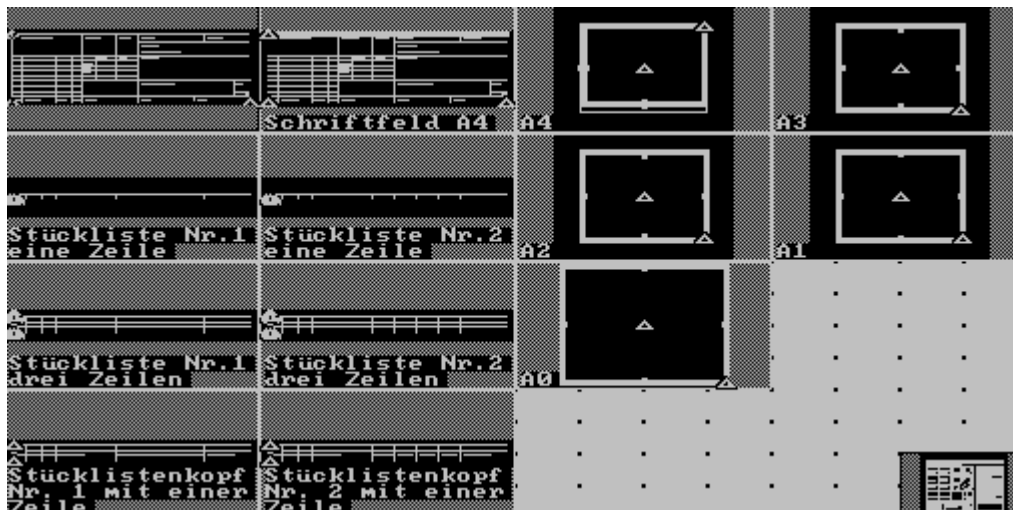
60529 Boat2



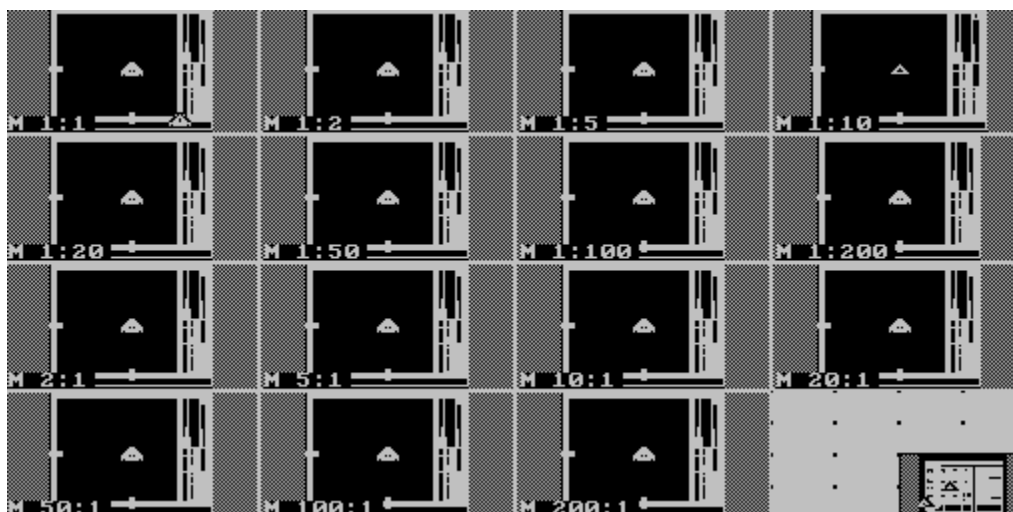
60547 Animal1



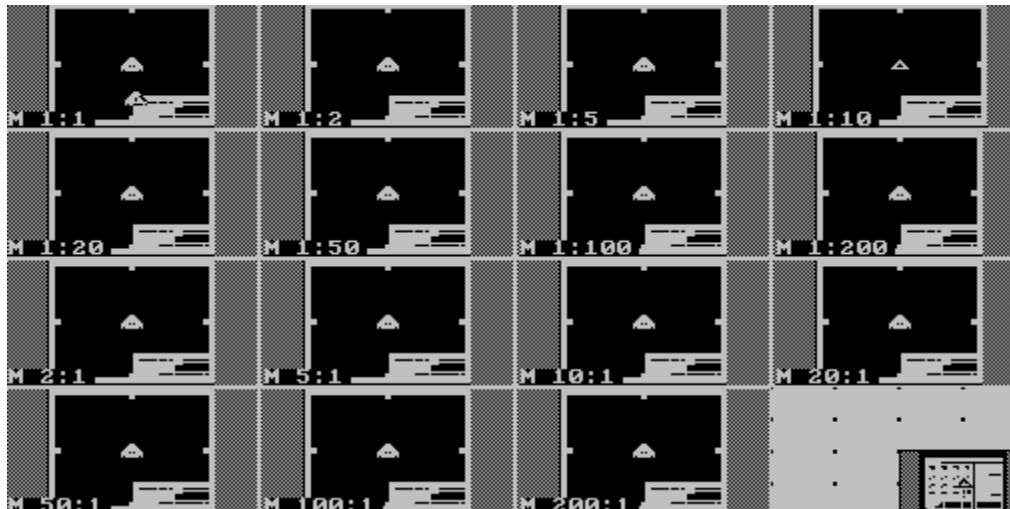
62280 Grundfor



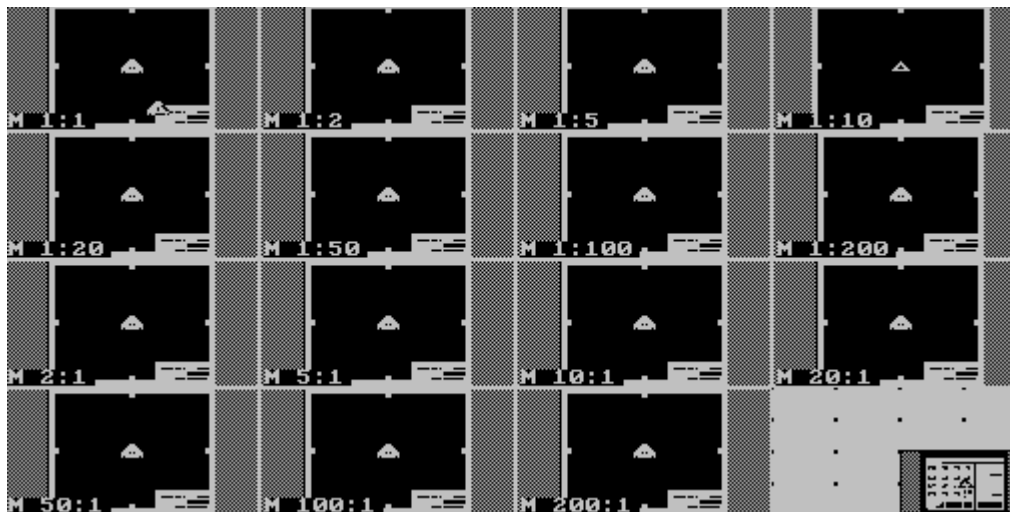
62281 A4Format



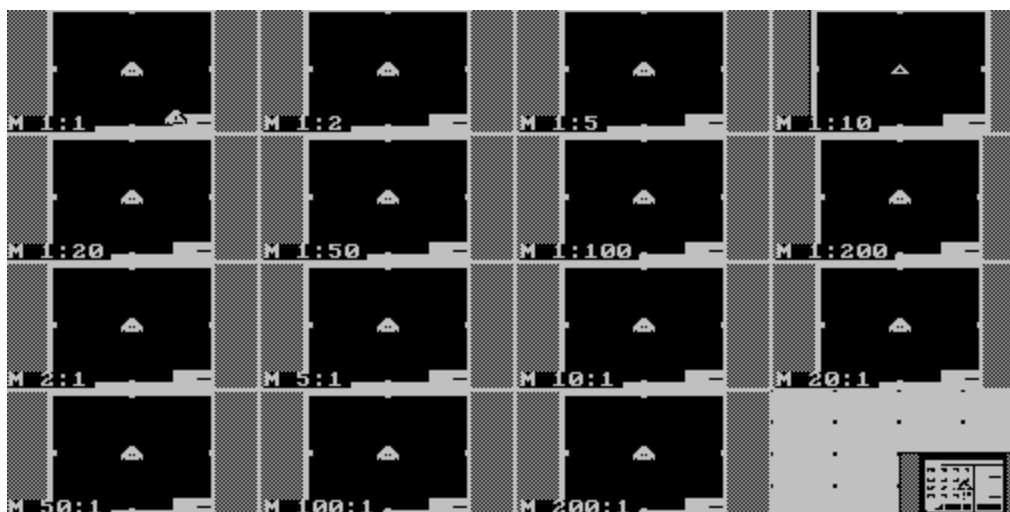
62282 A3Format



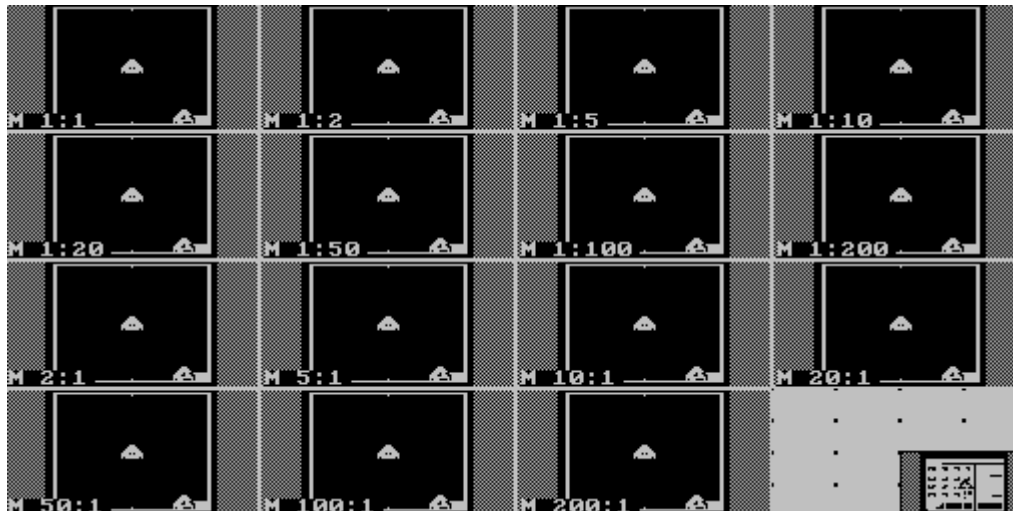
62283 A2Format



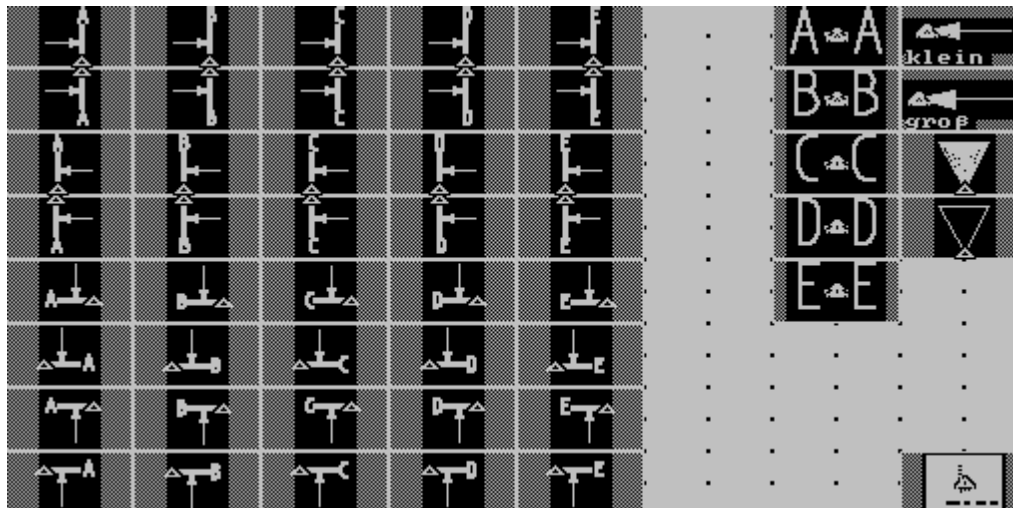
62284 A1Format



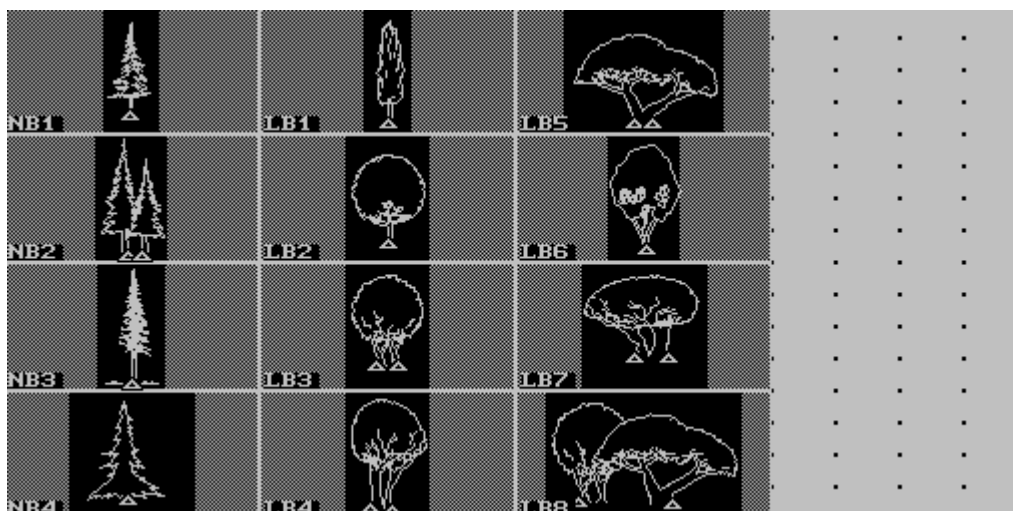
# 62285 A0Format



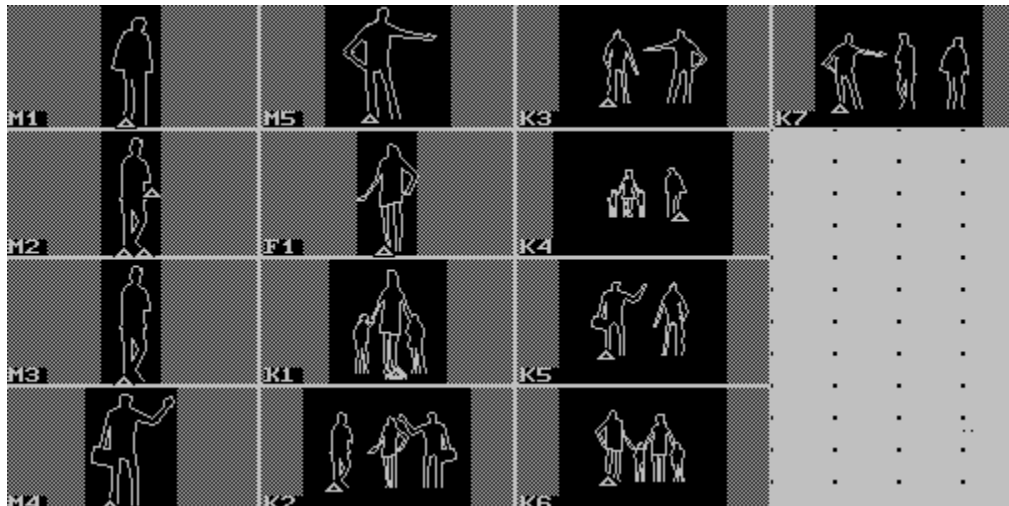
# 62317 Schnitte



# 62318 Tree5



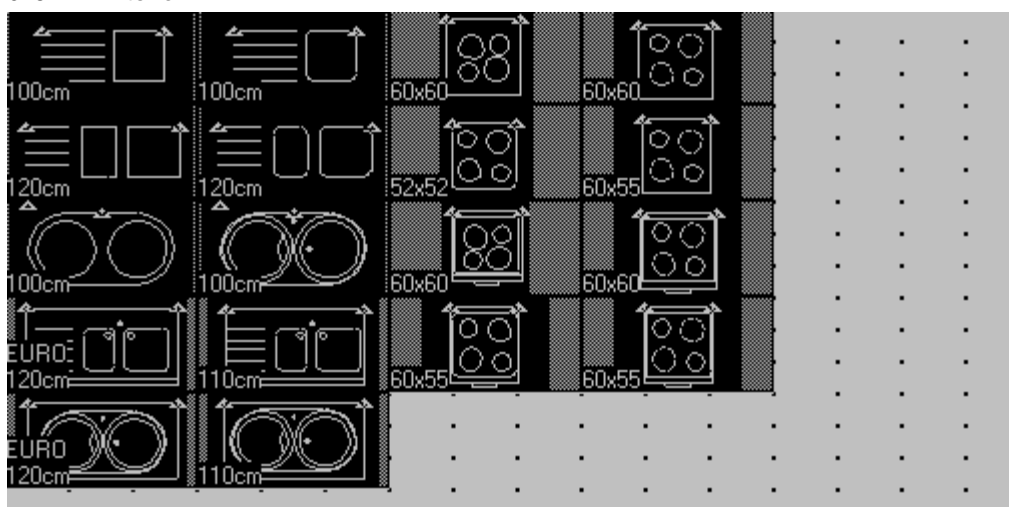
### 62319 People3



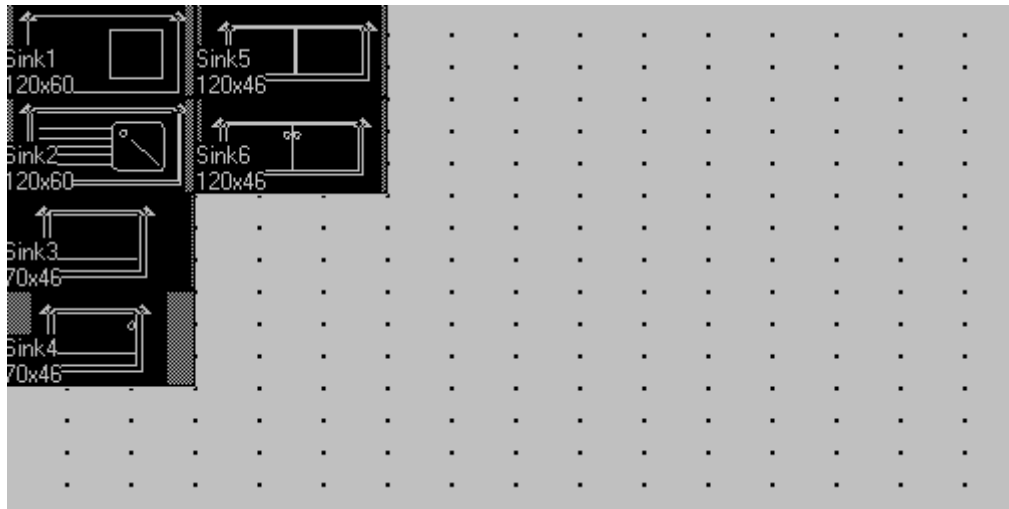
### 62320 Living1



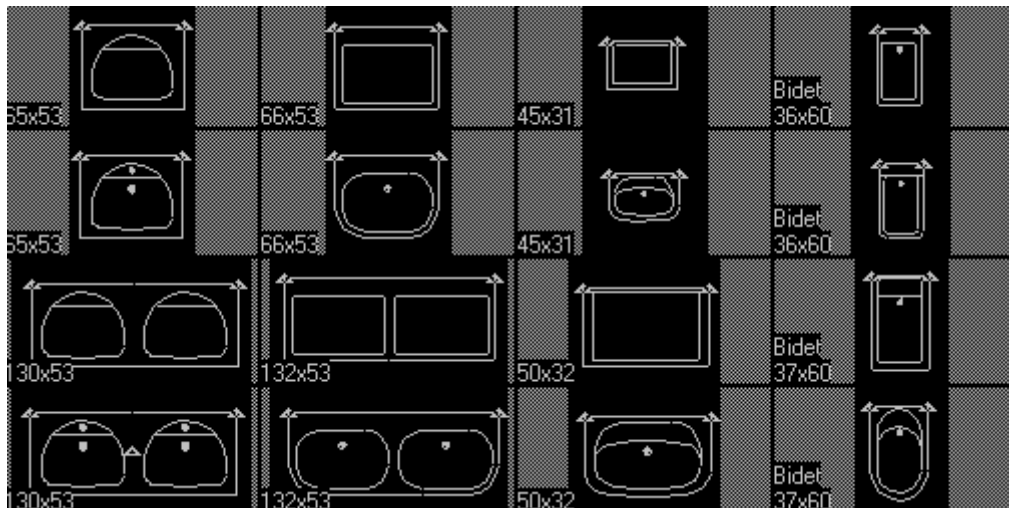
### 62321 Kitchen1



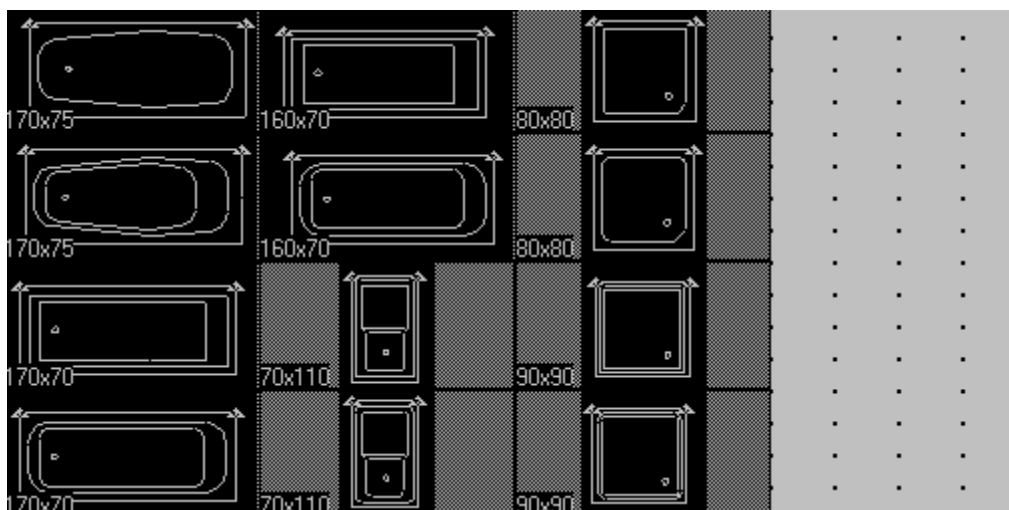
## 62322 Laundry



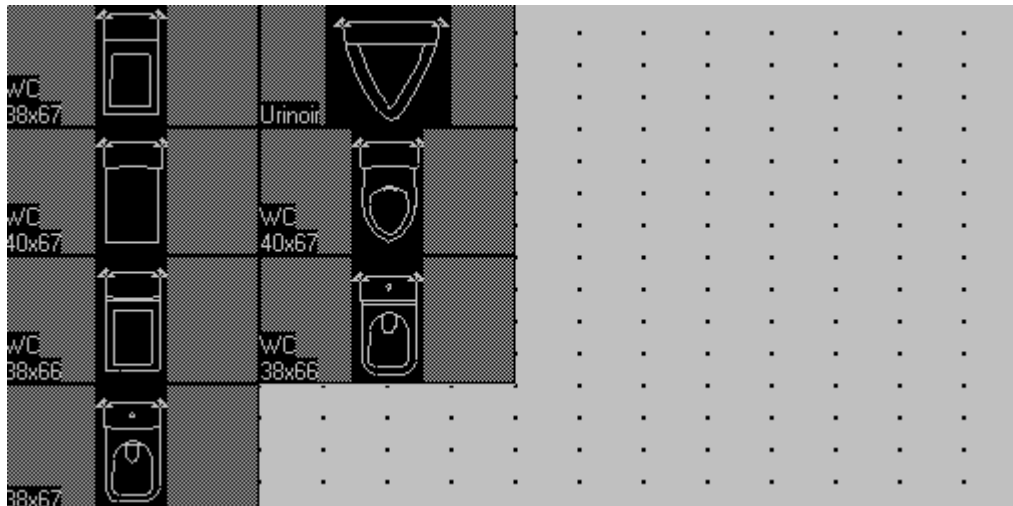
## 62323 Sink1



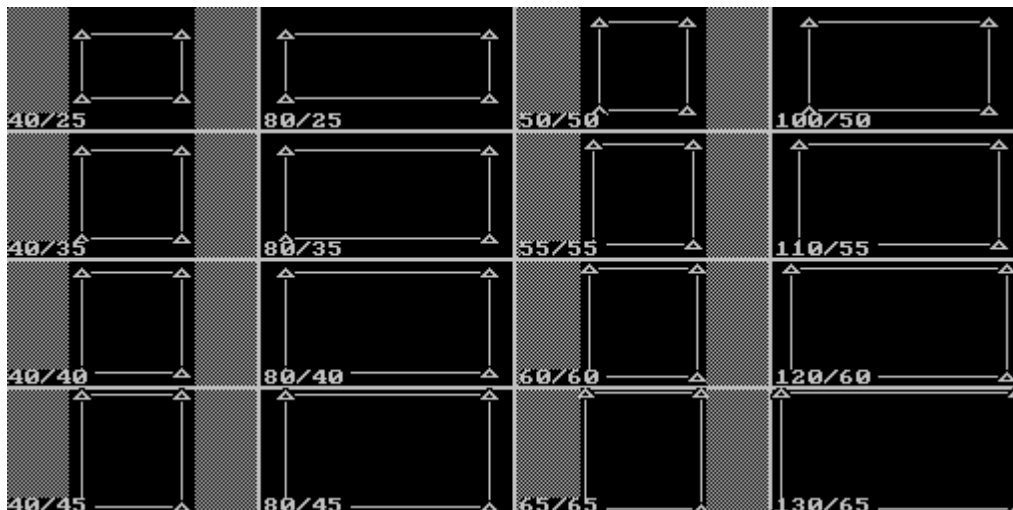
## 62324 Bath1



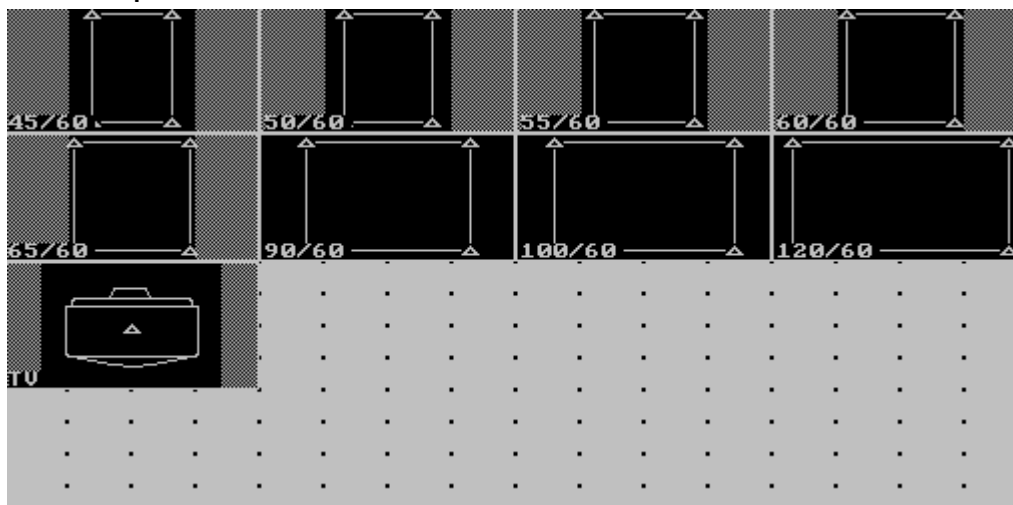
62325 Toile1



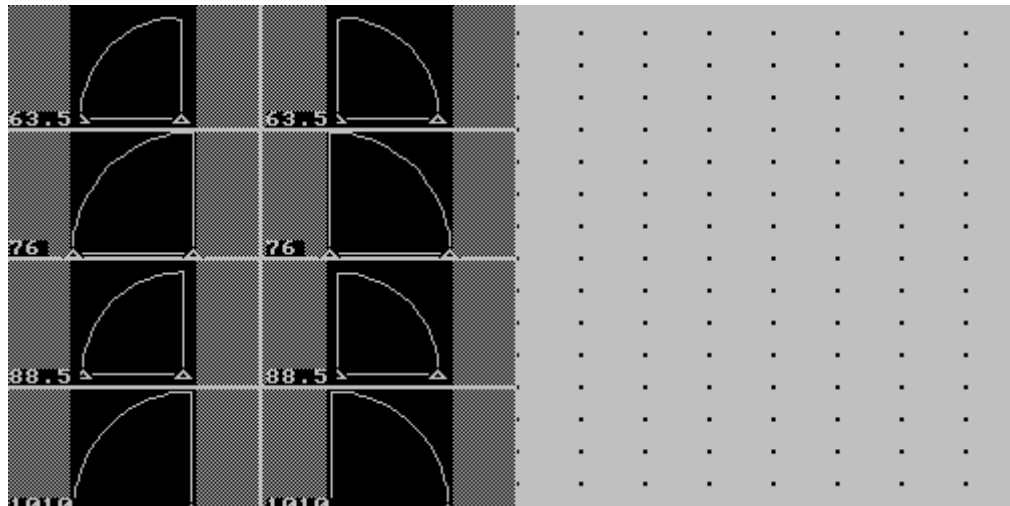
62326 Cupboard1



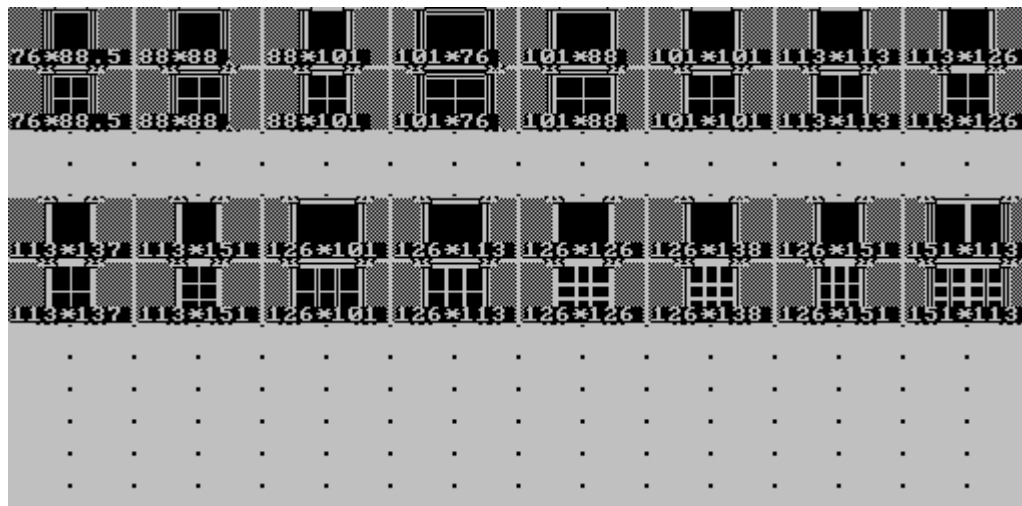
62327 Cupboard2



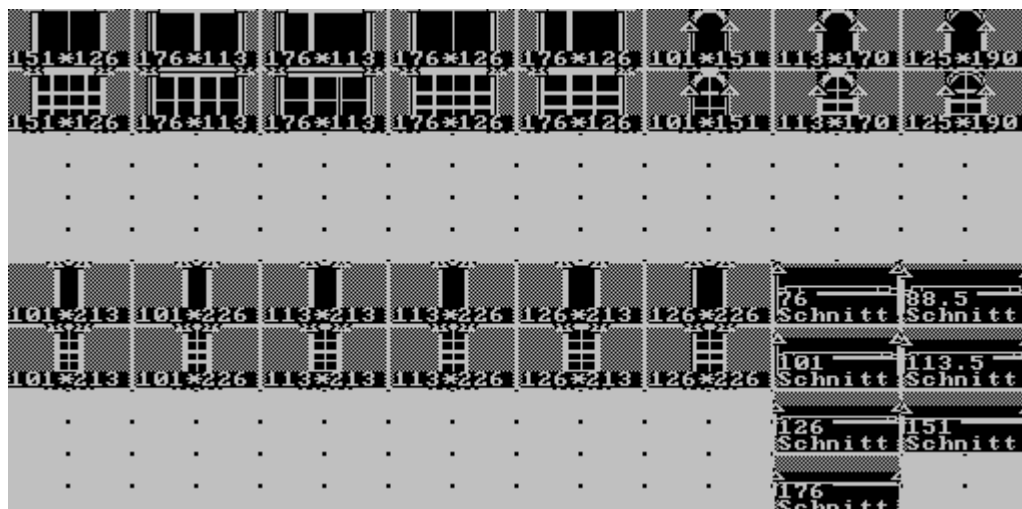
62328 Door1



62329 Window1

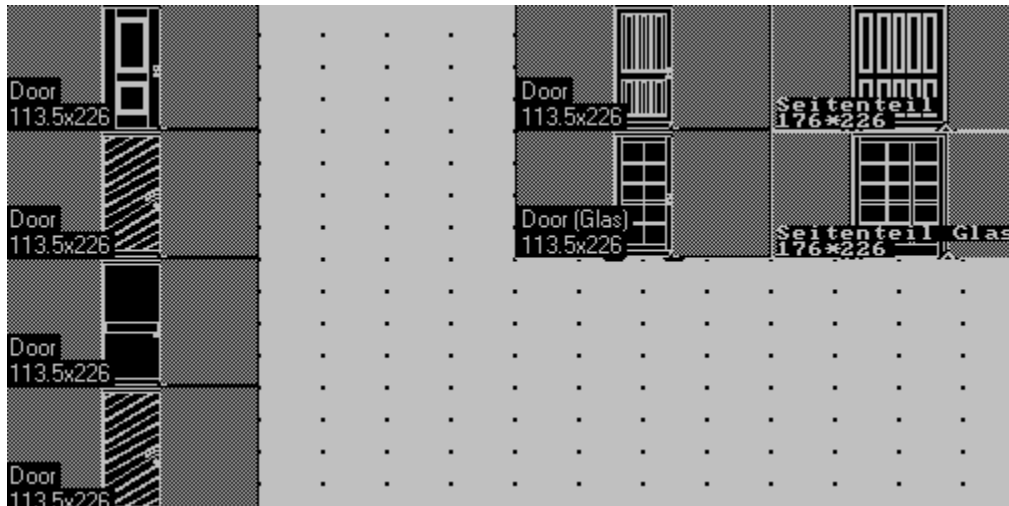


**62230 Window2**





## 62331 Door



## 62347 Hatches

