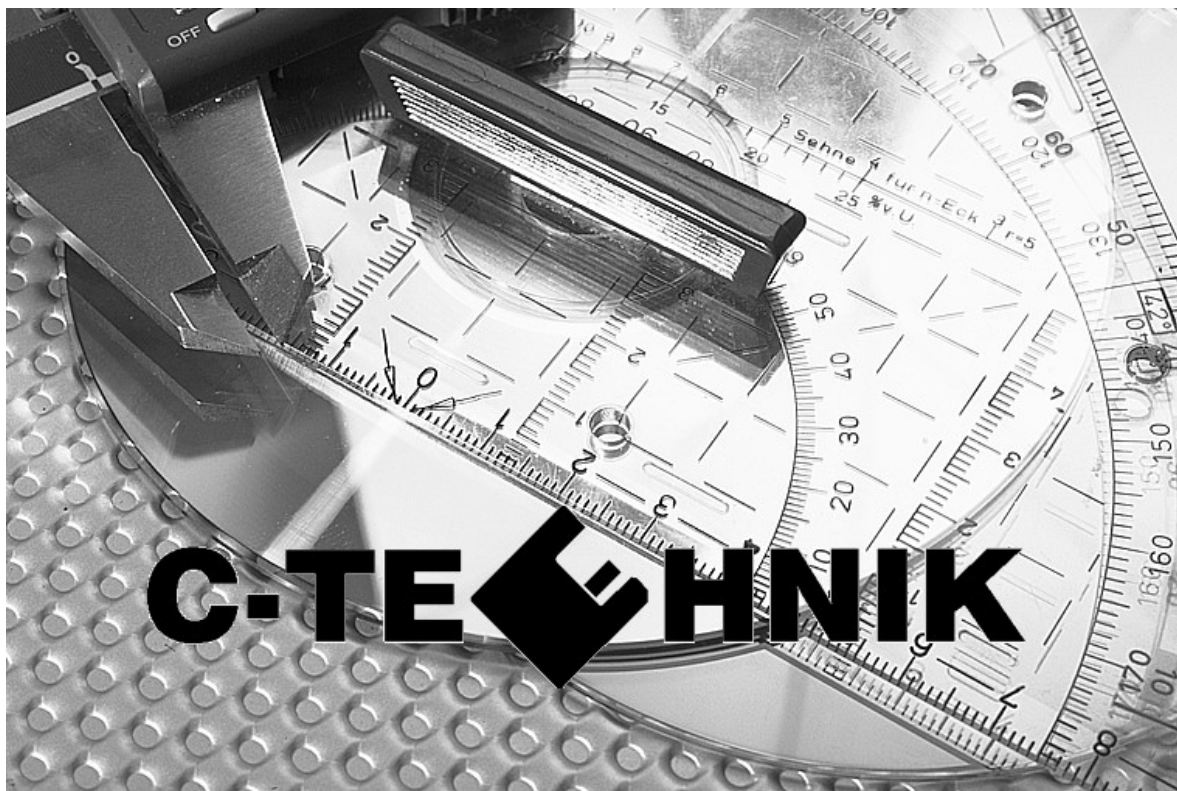


---

# REPLIB

## Manual



**Program for repairing  
CAD4U - Libraries**

Neither the whole nor any part of the information contained in, or the product described in, this manual may be adapted or reproduced in any material form except with the prior written approval of C-TECHNIK Software GmbH, Im Vogelsang 9, 74861 Neudenu / Germany.

The product described in this manual is subject to continuous development and improvement. All information of a technical nature and particulars of the product and its use (including the information and particulars in this manual) is given by C-TECHNIK Software GmbH in good faith. C-TECHNIK Software GmbH welcomes comments and suggestions relating to the product and this manual.

This manual is intended only to assist the reader in the use of the product and therefore C-TECHNIK Software GmbH shall not be liable for any loss or damage whatsoever arising from the use of information or particulars in, or any error or omission in, this manual, or any incorrect use of the product.

Copyright © C-TECHNIK Software GmbH - Germany 2013

## ***Trademarks***

Microsoft®, Windows® and IntelliMouse® are trademarks of Microsoft Corp.

Adobe® Acrobat® is a registered trademark of Adobe Systems Incorp.

CAD4U® and RoboCAD® are registered trademarks of C-TECHNIK Software GmbH - Germany.

All rights reserved!

September 2013

© C-TECHNIK Software GmbH  
Im Vogelsang 9  
74861 Neudenu  
Germany  
[info@c-technik.de](mailto:info@c-technik.de)  
[www.c-technik.de](http://www.c-technik.de)

---

# Content

<b>REPLIB.....</b>	<b>1</b>
<b>Manual.....</b>	<b>1</b>
Content.....	3
General.....	4
<b>REPLIB.....</b>	<b>6</b>
Introduction.....	6
Installing RepLib.....	7
Repairing a Library.....	7
<b>PROCEEDING.....</b>	<b>11</b>
Checking indexes.....	11
Comparing indexes.....	11
REPLIB.LOG.....	12
Comparing “Check library” and RepLib.....	12

### **C-TECHNIK Software GmbH End-User Software License Agreement**

THIS AGREEMENT IS A LEGAL DOCUMENT. READ IT CAREFULLY BEFORE COMPLETING THE INSTALLATION PROCESS AND USING THE SOFTWARE. IT PROVIDES A LICENSE TO USE THE SOFTWARE AND CONTAINS WARRANTY INFORMATION AND LIABILITY DISCLAIMERS. BY INSTALLING AND USING THE SOFTWARE, YOU ARE CONFIRMING ACCEPTANCE OF THE SOFTWARE AND AGREEING TO BECOME BOUND BY THE TERMS OF THIS AGREEMENT. IF YOU DO NOT WISH TO DO SO, DO NOT COMPLETE THE INSTALLATION PROCESS. PROMPTLY RETURN THE ENTIRE PACKAGE TO THE PLACE WHERE YOU OBTAINED IT, FOR A FULL REFUND.

#### **1. Definition**

"Software" means the programs supplied by C-TECHNIK Software GmbH herewith, and any and all updates thereto.

#### **2. License**

This Agreement allows you to install and use the Software only together with the relevant dongle and make one copy of the Software in machine-readable form solely for backup purposes. You must reproduce on any such copy all copyright notices and any other proprietary legends on the original copy of the Software.

#### **3. License Restrictions**

You may not make or distribute copies of the Software. You may not decompile, reverse engineer, disassemble, or otherwise reduce the Software to a human-perceivable form. You may not rent, lease or sublicense the Software. You may not modify the Software or create derivative works based upon the Software. You may not run the software without dongle.

#### **4. Upgrades**

If this copy of the Software is an upgrade from an earlier version of the Software and comes with a new dongle, it is provided to you on a license exchange basis. You agree by your installation and use of this copy of the Software to voluntarily terminate your earlier end-user license and that you will not continue to use the earlier version of the Software nor transfer it to another. If your earlier license included a dongle, you will send this dongle back to C-TECHNIK Software GmbH.

#### **5. Ownership**

The foregoing license gives you limited rights to use the Software. Although you own the media on which the Software is recorded, you do not become the owner of, and C-TECHNIK Software GmbH retains title to, the Software and all copies thereof. All rights not specifically granted in this Agreement, including Federal and International Copyrights, are reserved by C-TECHNIK Software GmbH.

#### **6. Limited Warranties**

C-TECHNIK Software GmbH warrants that, for a period of six (6) months from the date of delivery (as evidenced by a copy of your receipt):

(a) when used with a recommended hardware configuration, the Software will perform in substantial conformance with the documentation supplied with the Software; and (b) that the media on which the Software is furnished will be free

from defects in materials and workmanship under normal use. EXCEPT AS SET FORTH IN THE FOREGOING LIMITED WARRANTY, C-TECHNIK SOFTWARE GMBH DISCLAIMS ALL OTHER WARRANTIES, EITHER EXPRESS OR IMPLIED, INCLUDING THE WARRANTIES OF MERCHANTABILITY, FITNESS FOR A PARTICULAR PURPOSE AND NONINFRINGEMENT. IF APPLICABLE LAW IMPLIES ANY WARRANTIES WITH RESPECT TO THE SOFTWARE, ALL SUCH WARRANTIES ARE LIMITED IN DURATION TO SIX MONTHS FROM THE DATE OF DELIVERY. No oral or written information or advice given by C-TECHNIK Software GmbH, its dealers, distributors, agents or employees shall create a warranty or in any way increase the scope of this warranty.

## ***7. Exclusive Remedy***

Your exclusive remedy under Section 6 is to return the Software to the place you acquired it, with a copy of your receipt and a description of the problem. C-TECHNIK Software GmbH will use reasonable commercial efforts to supply you with a replacement copy of the Software that substantially conforms to the documentation, provide a replacement for defective media, or refund to you your purchase price for the Software, at its option. C-TECHNIK Software GmbH shall have no responsibility if the Software has been altered in any way, if the media has been damaged by accident, abuse or misapplication, or if the failure arises out of use of the Software with other than a recommended hardware configuration.

## ***8. Limitations of Damages***

(a) C-TECHNIK SOFTWARE GMBH SHALL NOT BE LIABLE FOR ANY INDIRECT, SPECIAL, INCIDENTAL OR CONSEQUENTIAL DAMAGES (INCLUDING DAMAGES FOR LOSS OF BUSINESS, LOSS OF PROFITS, OR THE LIKE), WHETHER BASED ON BREACH OF CONTRACT, TORT (INCLUDING NEGLIGENCE), PRODUCT LIABILITY OR OTHERWISE, EVEN IF C-TECHNIK SOFTWARE GMBH OR ITS REPRESENTATIVES HAVE BEEN ADVISED OF THE POSSIBILITY OF SUCH DAMAGES AND EVEN IF A REMEDY SET FORTH HEREIN IS FOUND TO HAVE FAILED OF ITS ESSENTIAL PURPOSE.

(b) C-TECHNIK SOFTWARE GMBH'S TOTAL LIABILITY TO YOU FOR ACTUAL DAMAGES FOR ANY CAUSE WHATSOEVER WILL BE LIMITED TO THE GREATER OF DM500 OR THE AMOUNT PAID BY YOU FOR THE SOFTWARE THAT CAUSED SUCH DAMAGE.

## ***9. Basis of Bargain***

The limited warranty, exclusive remedies and limited liability set forth above are fundamental elements of the basis of the agreement between C-TECHNIK Software GmbH and you. C-TECHNIK Software GmbH would not be able to provide the Software on an economic basis without such limitations.

## ***10. General***

This Agreement shall be governed by the internal laws of Germany. This Agreement contains the complete agreement between the parties with respect to the subject matter hereof, and supersedes all prior or contemporaneous agreements or understandings, whether oral or written.

CAD4U is a registered trademark of C-TECHNIK Software GmbH.

End-User License Agreement - C-TECHNIK Software GmbH - 2013

# REPLIB

---

## Introduction

This program can restore an invalid LIBINFO.SYS and/or an invalid LIBRARY.DAT.

After selecting a library, the program will detect the indexes existing in the library directory - see Index (Directory) - and compare it with the info's about the indexes which it will get from LIBINFO.LOG or LIBRARYD.LOG.

The following files will be rewritten, during the restoration:

- INDICES.DAT  
This file contains information about the existing indexes in the library in a binary format.
- LIBINFO.SYS  
This file contains information of all indexes in the library, including extra information, e.g. the name of an index, the date of creation, in binary format.
- LIBINFO.LOG  
This file contains the same information like LIBINFO.SYS. The file can be opened with any editor.
- LIBRARY.DAT  
This file contains information of all indexes in the library, including extra information, e.g. the name of an index, the date of creation, in binary format. In opposite to the file LIBINFO.SYS, some more information are stored in this file, such as the name of the project code. Furthermore the length of the name of an index is not restricted to 8 signs.
- LIBRARYD.LOG  
This file contains the same information like LIBRARYD.LOG. The file can be opened with any editor.

Before rewriting these files during the restoration, the existing ones will be renamed by RepLib.

**Please read the chapter Library Management in the online-help system in order to get more informations about the basics of the library-management used in CAD4U/CAMOD before using REPLIB.**

### **Warning**

We strongly recommend to make a backup copy of the library before using REPLIB !

An inexperted use of the program could cause crashes or loss of data.

C-TECHNIK Software GmbH shall not be liable for any damages!

---

## Installing RepLib

Before using RepLib3 you have to install the program first (if it is not installed yet).

**RepLib3 is based on the NET Framework 3.5.**

**If this Framework is not installed on a Windows **XP** PC, please install it first.**

All Windows version newer then XP (= Vista, ...) already contain a compatible .NET Framework.

Run the file SETUP\_REPLIB\_ENGLISH.EXE in order to install RepLib3.

---

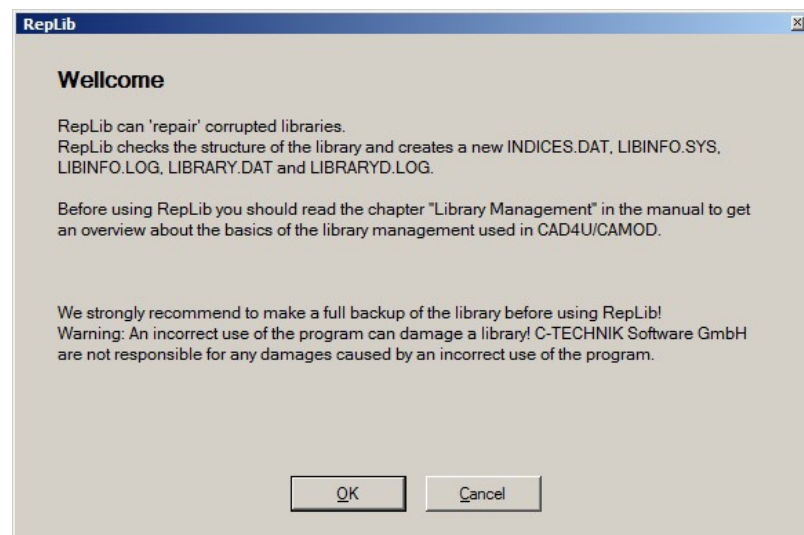
## Repairing a Library

RepLib can repair a damaged library of CAD4U, if one of the following files are corrupt: LIBINFO.SYS; LIBRARY.DAT and INDICES.DAT.

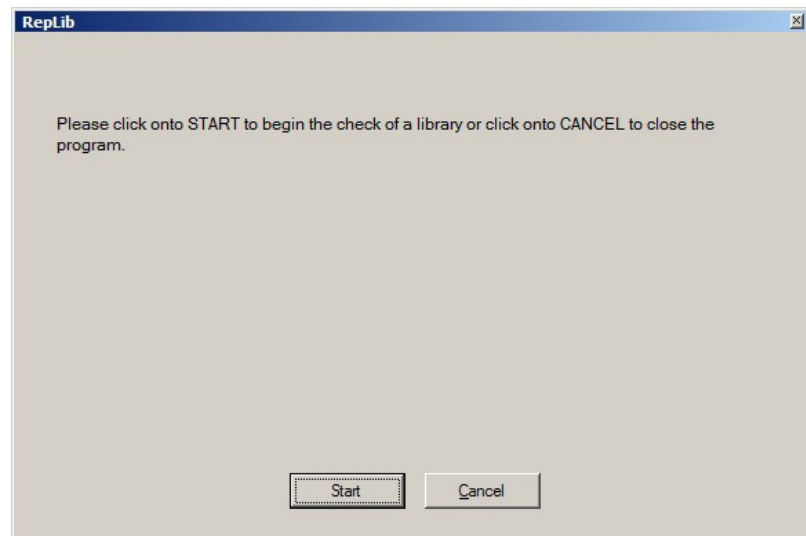
To do that RepLib compares the existing indexes found in the library directory with the info's from LIBINFO.LOG and/or LIBRARYD.LOG. If the program find an entry in the LIBINFO.LOG and/or LIBRAYD.LOG for an existing index (found in the library directory), it will adopt the info's (e.g. version, date, index name) from the LIBINFO.LOG. Otherwise it will add the newest version number, the date of creation of the directory and "\*\*\*\*\*" (instead of an index name) to the LIBINFO.SYS and LIBRARY.DAT.

But this will only the case if the index found in the library directory is "complete". If one of the following files CLRBITMAP, MONOBITMAP, INDEX, MACDEPS, SNAP is missing, the index will be renamed an will not be added to LIBINFO.SYS and LIBRARY.DAT.

1.) Start RepLib2 and click onto OK.

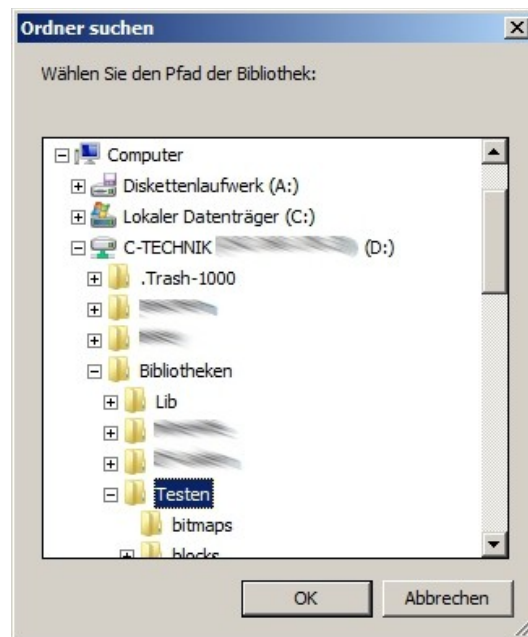


2.) Click onto START to choose the library which should be repaired.





The following window will be displayed:



Select the folder of the library you want to repair (e.g. Testen).

### Important:

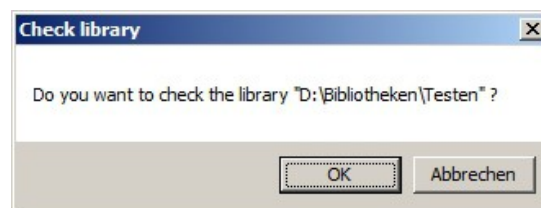
Please do not select a subfolder of a library!



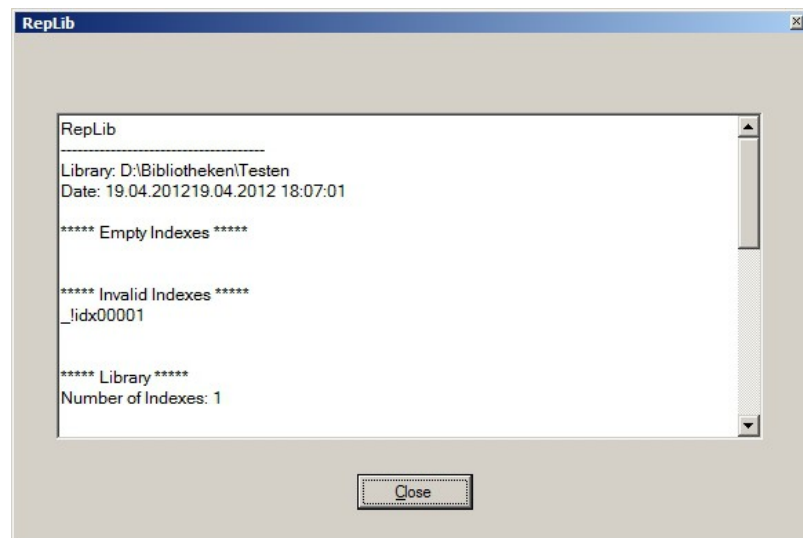
Right !

False !

3.) Click onto OK to start the restoring of the selected library.



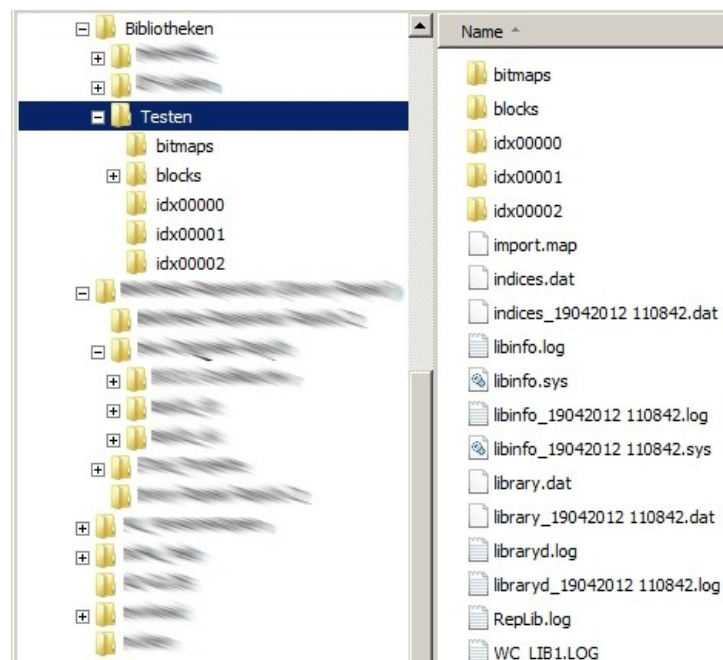
4.) When the program has finished the restoration of LIBINFO.SYS, it will file the results in a LOG file (REPLIB.LOG) and show it on the screen.



There are now five new files in the library: files INDICES.DAT, LIBINFO.LOG, LIBINFO.SYS, LIBRARY.DAT and LIBRARYD.LOG. The old files are renamed.

#### Example

INDICES.DAT -> INDICES\_19042012110842.DAT.



# PROCEEDING

---

## Checking indexes

RepLib checks the library for incomplete or empty indexes. These indexes will be renamed and **not** added to the newly created files LIBINFO.SYS, LIBRARY.DAT, LIBINFO.LOG, and LIBRARYD.LOG.


### Incomplete indexes

Incomplete indexes are indexes in which one of the following four files is missing:

- MONOBITMAP und CTRLBITMAP  
(an index is incomplete if both files are missing!)
- INDEX
- MACDEPS
- SNAP

Incomplete indexes will not be added to files LIBINFO.SYS, LIBRARY.DAT, LIBINFO.LOG, and LIBRARYD.LOG. Instead the indexes will be renamed by prefixing the name of the index with “\_!”.

#### Example

 \_lidx00001

### Empty indexes

Empty indexes are indexes (= folders) containing no files. These indexes will be also renamed (see above) and not added to files LIBINFO.SYS, LIBRARY.DAT, LIBINFO.LOG, and LIBRARYD.LOG.

---

## Comparing indexes

After checking the library for incomplete or empty indexes, RepLib compares the really existing (complete) indexes found in the library with the entries in LIBINFO.LOG and LIBRARYD.LOG.

If RepLib finds an entry for the existing index in one of the both files, this information (index number, version, date, index name) will be added to the newly created files LIBINFO.SYS and LIBRARY.DAT.

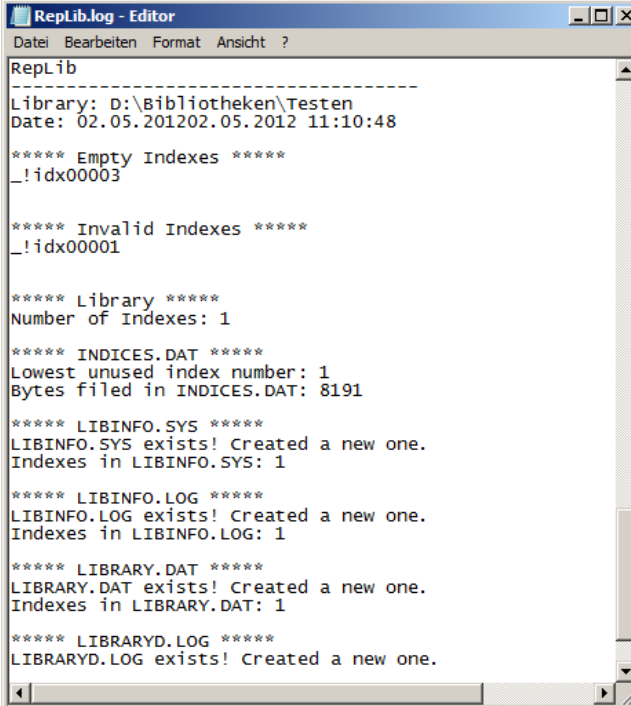
If RepLib finds no entry for an existing index in one of the both files LIBINFO.SYS and LIBRARY.DAT, it will add the index number, the actual date, and for the index name and the project code the word “unknown”. The field with the version no. will be contain 00.00.00.

---

## REPLIB.LOG

If RepLib has finished the repairing of the library the results will be added to the file REPLIB.LOG.

This file contains detailed information about what was done during the reparation of the library (e.g. are there incomplete or empty indexes, which files are newly created and so on).



```
RepLib
-----
Library: D:\Bibliotheken\Testen
Date: 02.05.2012 11:10:48
***** Empty Indexes *****
_!idx00003

***** Invalid Indexes *****
_!idx00001

***** Library *****
Number of Indexes: 1

***** INDICES.DAT *****
Lowest unused index number: 1
Bytes filed in INDICES.DAT: 8191

***** LIBINFO.SYS *****
LIBINFO.SYS exists! Created a new one.
Indexes in LIBINFO.SYS: 1

***** LIBINFO.LOG *****
LIBINFO.LOG exists! Created a new one.
Indexes in LIBINFO.LOG: 1

***** LIBRARY.DAT *****
LIBRARY.DAT exists! Created a new one.
Indexes in LIBRARY.DAT: 1

***** LIBRARYD.LOG *****
LIBRARYD.LOG exists! Created a new one.
```

---

## Comparing “Check library” and RepLib

CAD4U/CAMOD offers a function in the menu (LIBRARY/MAINTENANCE/CHECK LIBRARY) for checking the integrity of drawings within the library which contains Blocks and Inserts.

Drawings not only consists of single elements like lines or circles, but also can contain complete Inserts or groups, see DRAW: DRAG INSERT, FRAME INSERT or CREATE GROUP.

Moreover imported DXF/DWG drawings sometimes includes Inserts, too. When importing such a drawing the Inserts will be filed in the library as block files.

Corrupt Inserts or Blocks could result in an error message when loading a drawing. In this case you can try to fix the corrupt insert or block with CHECK LIBRARY first. You can use one or all of the options for checking the library.

**The difference between CHECK LIBRARY and RepLib is:**

**The function CHECK LIBRARY checks the integrity of drawings, whereas RepLib checks and repairs the structure of the library itself.**